



Gwasanaethau Offfha
Cyffredinol Cymru
Wales General
Ophthalmic Services



GIG
CYMRU
NHS
WALES



WGOS3: LOW VISION



LOW VISION AID CATALOGUE
VERSION 2026

www.eyecare.wales.nhs.uk

Page 1	Title Page
Page 2	Contents / Information
Page 3	TV Glasses / Detail Lenses
Page 4	Loupes / Chest Magnifiers / Bar Magnifiers
Page 5	Reading Aids / Clamps / Dome & Bar Magnifiers
Page 6	Hand Magnifiers - Non Illuminated
Page 7	Schweizer Illuminated Ergo Magnifiers - Handheld
Page 8	Eschenbach Illuminated Mobilux Magnifiers - Handheld
Page 9	Coil LED Magnifiers / Stand Magnifiers
Page 10	Schweizer Illuminated LED Stand Magnifiers
Page 11	Eschenbach Illuminated LED Stand Magnifiers
Page 12	Monoculars / Binoculars / Magnifying Lamp
Page 13	Daylight Lamps - Uno Pro Table Lamp & Twist Portable Lamp
Page 14	Noir UV Shields / Coil Hyperocular Magnifying Glasses
Page 15	Headlight / Electronic Aid EyeD
Page 16	Contact Information

Instructions for ordering Low Vision Aids -

This catalogue lists the items that can be ordered for people using WGOS3: Low Vision Service Wales

Most devices can be ordered for an individual by putting the details of the device in the appropriate table on a low vision record card which is then emailed to low.vision@wales.nhs.uk from a NHS email address.

Note -

To reduce queries and possible delays for patients, it is requested that you only order aids from this catalogue version 2026. Please discard all other copies you may have
Please contact the Low Vision Team in the first instance if you have any queries on the following number - 02921 500220
Practitioners should always be mindful that there is not an infinite budget. Please see extract from the WGOS 3 manual - 3.12.1 Although there are no limits on the number of LVAs prescribed, it would be expected that only in exceptional cases would more than five LVAs be prescribed per assessment.

LVA's not in the catalogue -

It may be possible to order an LVA that is not in the catalogue.
To do this you should email the record card and a short letter explaining why the person needs the aid to the Low Vision Team. If this request is approved then we will endeavour to source it for you.

Not sure what will work -

Occasionally you may need advice on what might be the most suitable aid for your patient.
In that case please contact the Low Vision Service Team on the details above who will forward your query to the clinical lead

SPECTACLE BINOCULARS - ESCHENBACH
Wheels on each side alter the magnification and focus

16241	<p>Maximize the size of distant objects, such as TV screens, with the easiest-to-fit, binocular, telescopic distance system ever introduced - Eschenbach MaxTV® glasses!</p> <p>2x magnification</p>
-------	--



SPECTACLE BINOCULARS - ESCHENBACH
Wheels on each side alter the magnification

16245	<p>Max Detail 2x magnification Near Vision Binoculars</p>
-------	---

SPECTACLE BINOCULARS - COIL
Wheels on each side alter the magnification and focus

4090	<p>2x (Distance) Tinted Lightweight distance tinted glasses for TV</p>
4090/02	<p>2x (Distance) Clear Lightweight distance tinted glasses for TV</p>



ESCHENBACH HEAD MOUNTED LOUPES
Working distance in brackets below for each strength

1644/51	2x (250mm) On Frame Binocular
1644/53	3x (160mm) On Frame Binocular
1646/20	2x (250mm) Clip-on (Binocular)
1646/25	2.5x (180mm) Clip-on (Binocular)
1646/30	3x (160mm) Clip-on (Binocular)
1646/40	4x (55mm) Clip-on (Monocular)
1646/70	7x (32mm) Clip-on (Monocular)



Please note, the top picture shows the clip on version in a 2x / 2.5x / 3x lens and can be clipped into the centre of the spectacles.

The bottom picture shows the 4x or 7x lens which is only available in a monocular version and can be clipped over one eye.

**LOUPES /
CHEST / BAR**

POCKET MAGNIFIERS /LOUPES - ESCHENBACH OPTIK	
171094	4x / 16 Dioptre Aspheric 35mm lens with lanyard
171097	7x / 28 Dioptre Aspheric 35mm lens with lanyard
1710910	10x / 38 Dioptre Aspheric 35mm lens with lanyard
174060	3.5x / 14.0 Dioptre Biconvex folding 60mm lens in leather pouch
174050	3.5x / 14.0 Dioptre Biconvex folding 50mm lens in leather pouch
174030	6.0x / 24.0 Dioptre Biconvex folding 30mm lens in leather pouch



The 1710 range has a plastic case with magnification of 4x, 7x and 10x
 The 1740 range has a leather case with magnification 3.5x in 50mm or 60mm lens and 6x in a 30mm lens

ROUND THE NECK MAGNIFIER FROM COIL- EASIVIEW	
5820	Easiview 145mm x 100mm 1.7x / 3.0 Dioptre magnification Ideal for hobby and craft work to give a hands free option



ROUND THE NECK CHEST MAGNIFIERS FROM ESCHENBACH	
2678	Eschenbach chest magnifier 140mm x 100mm rectangle lens 2x magnification Eschenbach chest magnifier 100mm circular lens 2x magnification
2677	Both with a cord that makes it possible to adjust the height to individual requirements. It's transparent mounting makes for shadow-free viewing

BAR/STRIP MAGNIFIERS - SCHWEIZER OPTIK / ESCHENBACH	
2605	Eschenbach 200mm x 25mm 1.5x Bar Magnifier
2606	Eschenbach 122mm x 26mm 2.0x Cyl Bar Magnifier
2608	Eschenbach 250mm x 35mm 1.5x Cyl Bar Magnifier

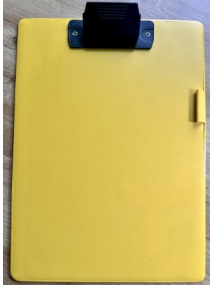


FRESNEL/SHEET MAGNIFIERS	
FPG	Page magnifier with soft touch frame (top picture left)
PAGE	Sheet magnifier , popular flexible sheet 280mm x 215mm 2x magnification

TYPOSCOPES AND WRITING AIDS

TYPO 4pk	Mixed 4 pack of Typoscopes
GUIDE-S	Signature Guide
Clipboard	A4 Yellow Clipboard with large black contrast plastic bulldog clip

Large easy grip black plastic clip and yellow vinyl backing replaces the discontinued blue clipboard



READING STANDS - FOR A MORE COMFORTABLE READING POSITION

1605	Eschenbach Reading Stand - 40cm x 35cm 5 different angles for a comfortable reading position enable you to read more comfortably and are adjustable to various positions. Suitable for newspapers, magazines and most books.
16051	Guide rail for reading stand - Optional Extra

DOUBLE ENDED CLAMP -

CLAMP	.Double ended clamp to hold the magnifier into any position, perfect for a hands free option. Strong clips at either end enabling a clamp to a table or desk
-------	---



BAR/STRIP MAGNIFIERS - COIL

5850/24	1.1x x 1.5x Bi-Axial VTM Clear Reader Magnifier
5850/22	VTM Line Reader 1.1x x 1.5x Bi Axial Magnifier With 6mm shaded reading line,



5850/12 Red	Visual Tracking Magnifier 40mm diameter lens 1.7x / 18.9D With clip on lid
5850/14 Red	VTM Bright Magnifier 40mm diameter lens 1.7x / 18.9D With clip on lid (as above but with a clear lens)

DOME "BRIGHTFIELD" MAGNIFIERS - COIL

5850	Original "Bright" 40mm diameter lens 1.7x / 18.9 Dioptre
5850/02	Original (VTM) 40mm diameter lens 1.7x / 18.9 Dioptre with shaded reading line



5850

HAND MAGNIFIERS

1420



1426 / 1436



DOME & SEGMENT MAGNIFIERS - ESCHENBACH

1420	65mm lens diameter 1.8x glass brightfield magnifier
1426	Eschenbach Makro-plus aspheric magnifier 1.8x magnification 65 x 35 x 46mm
1436	Eschenbach Makro-plus aspheric magnifier 2.2x magnification 90 x 35 x 70mm



HAND MAGNIFIERS - COIL BI-CONVEX (Windsor and ORO)

5249	2.3x / 5.2 Dioptre 98mm lens Windsor Bi-Convex Hand Magnifier
5248	2.6x / 6.4 Dioptre 70mm lens Windsor Bi-Convex Hand Magnifier
5247	4.4x / 13.6 Dioptre 48mm lens Windsor Bi-Convex Hand Magnifier

HAND MAGNIFIERS - COIL HI POWER ASPHERIC RANGE

5216	1.7x / 8.0 Dioptre 96x71mm Bi-Aspheric with pouch
5216	2.3x / 5.2 Dioptre 96x71mm Bi-Aspheric with pouch
5203	3x / 8.0 Dioptre 80mm Bi-Aspheric with pouch
5204	4x / 12.0 Dioptre 80mm Bi-Aspheric with pouch
5206	6x / 20.0 Dioptre 50mm Bi-Aspheric with pouch



These magnifiers have ergonomic handle designs, suitable for both right and left handed users

HAND MAGNIFIERS - ESCHENBACH NON ILLUMINATED

2614/80	2.5x Visomed Biconvex 80mm 5.1D
2614/65	3x Visomed Biconvex 65mm 7.4D
2655/175	2.75x/ 100x75mm 7D Aspheric
2655/150	3x 100x50mm 7.6D Aspheric
2655/750	3.5x 70x50mm 10D Aspheric
2655/70	4x 70mm 16.0D Aspheric
2655/60	5x 60mm 20.0D Aspheric
2655/50	6x 50mm 23.0D Aspheric
2666/950	2.7x 90x50mm 6.8D Aplanic
2666/75	2.8x 75mm 7.4D Aplanic
2666/60	3.8x 60mm 11.3D Aplanic
2666/50	6x 50mm 14D Aplanic



Visomed



Aspheric



Aspheric



**Schweizer Ergo Mobil Illuminated
LED Hand Magnifier**

ERGO MOBIL - SCHWEIZER OPTIK 4500K	
164062	1.5x / 6 Dioptr / 100mm Diameter lens
164092	2x / 8 Dioptr / 85mm Diameter lens
164112	2.5x / 10 Dioptr 75x50mm Rectangle lens
164122	3x / 12 Dioptr / 70mm Diameter lens
164162	4x / 16 Dioptr / 60mm Diameter lens
164202	5x / 20 Dioptr / 55mm Diameter lens
164242	6x / 24 Dioptr / 52.5mm Diameter lens
164282	7x / 28 Dioptr / 35mm Diameter lens
164392	10x / 39 Dioptr / 35mm Diameter lens
164482	12x / 48 Dioptr / 35mm Diameter lens
164562	14x / 56 Dioptr / 35m Diameter lens
160+	Base stand for Schweizer magnifier as shown to give a hands free option (Please state which magnifier it is for when ordering) Base code is 160+ last 3 digits of the magnifier codes above. Eg:160162 for 4x magnifier



Schweizer Ergo base



Schweizer Ergo base

The Ergo Base is designed to fit your Ergo Hand Magnifier. Each Base is specific to the strength of your magnifier giving you the best focal image.

The Ergo Base means you can use your hand magnifier as a stand magnifier but also enables you to get objects under the magnifier whilst being hands-free.

Base code is 160+ last 3 digits of the magnifier codes above.
eg:160162 for 4x magnifier (164162)

**Eschenbach Mobilux Illuminated
LED Hand Magnifier**



POCKET LED ILLUMINATED MAGNIFIERS - ESCHENBACH

15112	3x/12 Dioptre Mobilux aspheric 60 mm lens
15113	3.5x/10 Dioptre Mobilux aspheric 75x50 mm lens
15114	4x/16 Dioptre Mobilux aspheric 75x 50mm lens
151141	4x/16 Dioptre Mobilux aspheric 60 mm lens
15115	5x/20 Dioptre Mobilux aspheric 58 mm lens
15116	6x/24 Dioptre Mobilux aspheric 60mm lens
15117	7x/28 Dioptre Mobilux aspheric 35 mm lens
151110	10x/38 Dioptre Mobilux aspheric 35 mm lens
151112	12.5x/50 Dioptre Mobilux aspheric 35 mm lens
	Eschenbach Mobase to hold mobilux magnifiers and give hands free viewing -
1511001	151100 + required magnification
1511002	1511001 for magnifications 3x / 3.5x / 4x
1511003	1511002 for magnifications 5x / 6x
1511004	1511003 for magnifications 7x 1511004 for magnifications 10x / 12.5x



Eschenbach Mobase

The Eschenbach Mobase is designed to fit your Mobilux hand magnifier. Each Base is specific to the strength of your magnifier giving you the best focal image.

The Mobase means you can use your hand magnifier as a stand magnifier but also enables you to get objects under the magnifier whilst being hands-free.

Base code is 1511001 + last 3 digits as shown in the table above for the required Mobilux magnifier.

AT MAX - COIL POCKET LED ILLUMINATED MAGNIFIERS	
8273	3x / 9 Dioptre 83mm x 59mm Bi-aspheric Lens
8275	5x / 16 Dioptre 60mm Aspheric Lens
8277	7x / 24 Dioptre 58mm Aspheric Lens
8299	9x / 32 Dioptre 40mm Aspheric Lens
8211	11x / 40 Dioptre 40mm Aspheric Lens



STAND MAGNIFIERS - COIL HI POWER NON ILLUMINATED	
4206	6x / 20 Dioptre 50mm Bi-Aspheric lens
4208	8x / 28 Dioptre 44mm Bi-Aspheric lens
4210	10x / 36 Dioptre 36mm Bi-Aspheric lens
4212	12x / 44 Dioptre 34mm Bi-Aspheric lens
4215	15x / 56 Dioptre 29mm Bi-Aspheric lens

STAND MAGNIFIERS - COIL HI POWER	
5214	4x / 12 Dioptre 80mm Bi-aspheric lens

- Crystal Clear Magnification
- Hands free use
- Available in 4x magnification
- Large distortion free lens
- Adjustable Tilt Stand for Comfort
- Left or right handed viewing



STAND MAGNIFIERS - COIL	
5855	1.7x / 3 Dioptre 140x100mm rectangle lens 'Clearview' Stand Magnifier. It can be comfortably used when placing hands underneath the lens to hold a book etc. Perfect for hands free hobbies.

STAND MAGNIFIERS - ESCHENBACH NON ILLUMINATED	
1153	Eschenbach 8x/28.7D 24mm Aplanatic
2626	Eschenbach 6x/23.0D 50mm Aspheric
2628	Eschenbach 10x/38.0D 35mm Aspheric





**Schweizer Okolux Illuminated
LED Stand Magnifier**

For the Schweizer magnifiers below, we list magnifier heads and handles separately to make it easy for you to order if you only require the head or a replacement handle.

Please order both handle and magnification head you require

HEAD	ÖKULUX PLUS LED ILLUMINATED STAND MAGNIFIER - SCHWEIZER	
140082	2x / 8 Dioptre 100mm x 75mm aspheric lens	(head only)
140122	3x / 12 Dioptre 70mm diameter aspheric lens	(head only)
140162	4x / 16 Dioptre 60mm diameter aspheric lens	(head only)
140202	5x / 20 Dioptre 55mm diameter aspheric lens	(head only)
140242	6x / 24 Dioptre 55mm diameter aspheric lens	(head only)
140282	7x / 28 Dioptre 35mm diameter aspheric lens	(head only)
140392	10x / 39 Dioptre 35mm diameter aspheric lens	(head only)
140482	12x / 48 Dioptre 35mm diameter aspheric lens	(head only)
140562	14x / 56 Dioptre 35mm diameter aspheric lens	(head only)
HANDLE 146002	Schweizer LED Handle 6000k light	(to combine with all heads above)





**Eschenbach System Vario Plus
Illuminated LED Stand Magnifier**

For the Eschenbach magnifiers below, we list magnifier heads and handles separately to make it easy for you to order if you only require the head or a replacement handle.

Please order both handle and magnification head you require

HEAD	ESCHENBACH - SYSTEM VARIO	
158263	2.8x / 7 Dioptre Aspheric 100x75mm with moveable reading line	(head only)
158063	3x / 7.6 Dioptre Aspheric 100x50mm with moveable reading line	(head only)
155993	3x / 12 Dioptre Aspheric 80mm	(head only)
155493	4x / 16 Dioptre Aspheric 70mm with moveable reading line	(head only)
155393	5x / 20 Dioptre Aspheric 60mm with moveable reading line	(head only)
155273	6x / 23 Dioptre Aspheric 50mm	(head only)
155173	7x / 28 Dioptre Aspheric 35mm	(head only)
155073	10x / 38 Dioptre Aspheric 35mm with removable scale.	(head only)
155773	12.5x / 50 Dioptre Aspheric 35mm	(head only)
1599144	Eschenbach LED Handle System Vario	



**MONOCULARS /
MAG LAMP**

Short focus monoculars will focus on an image or text at the distances shown in brackets and will also focus to infinity by adjusting the monocular. They are supplied with a case and soft cloth for cleaning.

SPECWELL CLOSE FOCUS MONOCULARS All focus to infinity and close focus range shown in brackets	
2.75x8	Short-focus Monocular 4x (150mm focus)
4x12	Short-focus Monocular 4x (200mm focus)
6x16	Short-focus Monocular 6x (260mm focus)
8x20	Short-focus Monocular 8x (300mm focus)
8x20R	Short-focus Monocular 8x (300mm focus) Rubber covered
10x20	Short-focus Monocular 10x (400mm focus)
1631	Spec Frame for 2.75x or 4x monocular



BINOCULAR - MONOCULAR	
8x21	8x21 Roof Prism Binoculars Visionary
10x25	10x25 Roof Prism Binocular Visionary
10x25	10x25 Roof Prism Monocular Visionary



MONOCULAR - ESCHENBACH	
4293616	Club M 6x16 Rectangular Monocular—Sliding Focus
4293816	Club M 8x16 Rectangular Monocular—Sliding Focus



DESKTOP MAGIFYING LAMP WHITE - 1.75X LED	
DLMP/WH	Desktop magnifying lamp LED - white 1.75x

Desktop Magnifier Lamp White 1.75x / 4x insert

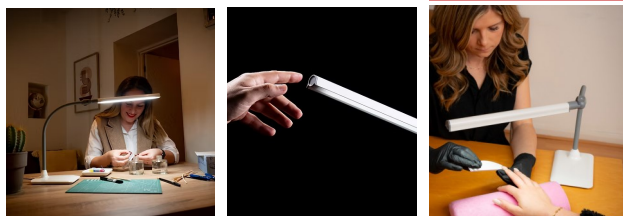
Measuring 37cm in height it features a 100mm lens with dust cover. It has a weighted base with a forward motion arm and 360 degree upper ball joint enabling the lens to be rotated and positioned into almost any angle.
Mains powered (220—240v).

DAYLIGHT UNO DESK LAMP

DN1450	Daylight Uno PRO Desk Lamp LED (one tube)
--------	---

The Uno lamp also powers on and off easily featuring a 4 step dimmer light

- Flexible arm directs light exactly where needed
- Bright LEDs for true colour matching
- Touch switch dimmer with 4 brightness levels
- Lamp brightness: 1,150 Lux at 30cm
- Colour temperature 6000k
- CRI 95+
- Energy consumption 8w



TWIST2 PORTABLE LED LAMP

D35070	Daylight Twist2 Lamp
--------	----------------------

- Portable and compact
- Easy to grip carry handle
- 3 brightness levels
- Twist shade
- Lumens: 350
- Lux output at 30cm: 1,500 / 1,000 / 600
- Light colour temperature: 6,000K
- Energy consumption: 5W
- Maximum reach: 26cm
- Product weight: 1.0kg
- CRI: 95+



**UV SHIELDS /
COIL
HYPEROCULAR**

The percentage listed for each filter is the amount of light that is transmitted through while the rest is blocked.

NOIR UV FILTERS	
U21	UV Shield 28% Grey medium
U22	UV Shield 11% Grey medium
U30	UV Shield 5% Grey/Green medium
U40	UV Shield 18% Amber medium
U57	UV Shield 77% Yellow medium
U67	UV Shield 45% Orange medium
U98	UV Shields 29% Red (medium)
KS-421	Children's UV Shields Grey 32% (small)
KM-421	Children's UV Shields Grey 32% (medium)
KS-440	Children's UV Shields Amber 16% (small)
KM-440	Children's UV Shields Amber 16% (medium)
KS-450	Children's UV Shields Yellow 54% (small)
KM-450	Children's UV Shields Yellow 54% (medium)



Suggested applications -
Macular Degeneration U40 / U21 / U22
Cataract U22
Diabetic Retinopathy U60 / U22
Retinitis Pigmentosa U67 / U98 / U57
Glaucoma U21 / U22
All Eye-shields supplied complete with soft case



The Coil aspheric hyperocular spectacles are similar to an ordinary pair of spectacles in design and look. Each pair are available at each magnification in either both eyes, the magnification in the left eye or the magnification in the right eye.

If the magnification is only needed in the left or right eye, then the opposite lens will be clear.



COIL HYPEROCULAR MAGNIFYING SPECTACLES	
3146	Coil 4x Hyperocular Magnifying Glasses OU (Both Eyes)
3147	Coil 4x Hyperocular Magnifying Glasses OD (Right Eye)
3148	Coil 4x Hyperocular Magnifying Glasses OS (Left Eye)
3149	Coil 5x Hyperocular Magnifying Glasses OU (Both Eyes)
3150	Coil 5x Hyperocular Magnifying Glasses OD (Right Eye)
3151	Coil 5x Hyperocular Magnifying Glasses OS (Left Eye)
3152	Coil 6x Hyperocular Magnifying Glasses OU (Both Eyes)
3153	Coil 6x Hyperocular Magnifying Glasses OD (Right Eye)
3154	Coil 6x Hyperocular Magnifying Glasses OS (Left Eye)
3155	Coil 8x Hyperocular Magnifying Glasses OU (Both Eyes)
3156	Coil 8x Hyperocular Magnifying Glasses OD (Right Eye)
3157	Coil 8x Hyperocular Magnifying Glasses OS (Left Eye)
3158	Coil 10x Hyperocular Magnifying Glasses OU (Both Eyes)
3159	Coil 10x Hyperocular Magnifying Glasses OD (Right Eye)
3160	Coil 10x Hyperocular Magnifying Glasses OS (Left Eye)
3161	Coil 12x Hyperocular Magnifying Glasses OU (Both Eyes)
3162	Coil 12x Hyperocular Magnifying Glasses OD (Right Eye)
3163	Coil 12x Hyperocular Magnifying Glasses OS (Left Eye)



The Norville frames and lenses are now discontinued but limited stocks are available. Please contact the admin team before ordering to see if the frames and lenses you require are available.

The Coil hyperoculars on the previous page offer a suitable alternative and are available in 4x - 12x magnification is both eyes or either eye (frosted and black occluders are not an option)

NORVILLE FRAMES AND LENSES - PLEASE NOTE THERE ARE LIMITED STOCKS OF THIS END OF LINE RANGE	
L	Large Frame
S	Small Frame
B	Black Occluder
F	Frosted
O	Clear (plano) HC MAR Coated
+4	+4.00 D HC MAR Coated
+6	+6.00 D HC MAR Coated
+8	+8.00 D HC MAR Coated
+10	+10.00 D HC MAR Coated
+17.25	+17.25 D HC MAR Coated
+20	+20.00 D HC MAR Coated
+28	+28.00 D HC MAR Coated
+32	+32.00 D HC MAR Coated
+40	+40.00 D HC MAR Coated

This is our highest priced LVA in the catalogue, therefore careful prescribing is important

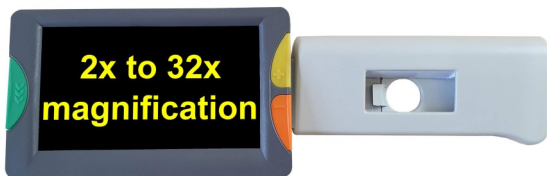
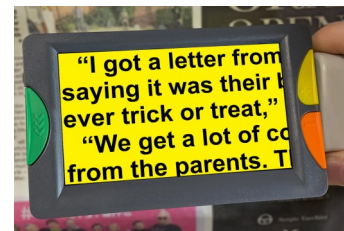
EYED ELECTRONIC HANDHELD MAGNIFIER

EYEDV2	EyeD Electronic Handheld Magnifier
--------	------------------------------------

The Eye-D v2 is a handheld magnifier that offers sharp clear image quality and flexibility of use with its integrated handle.

Unfold the handle to use its comfortable grip while reading or reviewing small print and pictures.

When you are ready to write or slide the unit across material, simply fold the handle under the main body for a writing stand and perfect ergonomic viewing angle.



- Key Features -
- 4.3 inch screen / Up to 32x magnification
 - Two reading positions / Two handwriting positions
 - Freeze frame with zoom
 - Adjustable Screen Brightness and Contrast
 - Can be connected to your TV



HEADLIGHT LAMP

HEADLIGHT	LED Headlight Lamp
-----------	--------------------

LED Head Light features a rubberised protective casing, a 3 function soft touch switch and an adjustable swivel head unit.

The product also features an adjustable head strap

Perfect to give light in an handsfree situation



Gwasanaethau Offthalmig
Cyffredinol Cymru
Wales General
Ophthalmic Services



WGOS3: Low Vision

Contact Details

**Low Vision Service Wales
Teilo Offices
Glangwili General Hospital
Dolgwili Road
Carmarthen
SA31 2AF**

Telephone: 02921 500220

Email: low.vision@wales.nhs.uk

**LOW VISION AID CATALOGUE
VERSION 2026**

www.eyecare.wales.nhs.uk